



Top Margin 25mm

Sample

2016XXXX

JSAE Paper No.

Centering with 16pt.

Type the Title of the Paper

Centering with 11pt.

- Type the Subtitle of the Paper -

Author's Name: Centering with 11 pt. bold
The given name comes before the family name

Main author's Name¹⁾ Co-author's Name²⁾

Author's Affiliation, Address: Centering with 9 pt. Italic

1) Society of Automotive Engineers,

Inc., 10-2 Gobancho, Chiyoda, Tokyo, 102-0076, Japan (E-mail: taro@jsar.or.jp)

2) JSAE University, Graduate School of Engineering,

1-1 Sanbancho, Chiyoda, Tokyo, 102-0033, Japan

Abstract: in 100 words or less with 9 pt.

Presented at the EVTeC and APE Japan on May XX, 2016

ABSTRACT: Explain the essential points in 100 words or less.

Keywords: with 9pt.

Category 1 (required)

Category 2 (optional)

Category 3 (optional)

Fee Keywords

Category Code
Refer to "Standardized Keywords" table.

KEY WORDS: heat engine, spark ignition engine, combustion analysis, Flame, Electric Fields (A1)

Chapter: Centering with bold, All Capital Letters, 9pt.

Text: with 9pt.

1. INTRODUCTION

2.2.1. Sub-subheading

Clearly describe the purpose, contents, and conclusion of the research, while complying with the ethical guidelines of the JSAE. Company and product names, terminology whose usage is restricted to within a particular company, and commercial content may not be included in the main text..

8mm Margin between Columns

2. SECTION TITLE

2.1. Subheading

Clearly describe the purpose, contents, and conclusion of the research, while complying with the ethical guidelines of the JSAE. Company and product names, terminology whose usage is restricted to within a particular company, and commercial content may not be included in the main text..

Left Margin 18mm

2.2. Subheading

Type the contents of the section here.

Right Margin 18mm



Fig. 1 Type the Caption Here.

Place figure titles below the figures and table titles above the tables.
#Titles: 9-point, Times New Roman,
#Characters in figures and tables: 7-point or larger

↑
Top Margin 25mm
↓

Table 1 Type the Caption Here.

Condition	Index	Level
A	AAA	D
B	BBB	E
C	CCC	F

2.2.2. Sub-subheading

Type the contents of the section here.

Note for “References” is indicated in “REFERENCES” as below⁽¹⁾

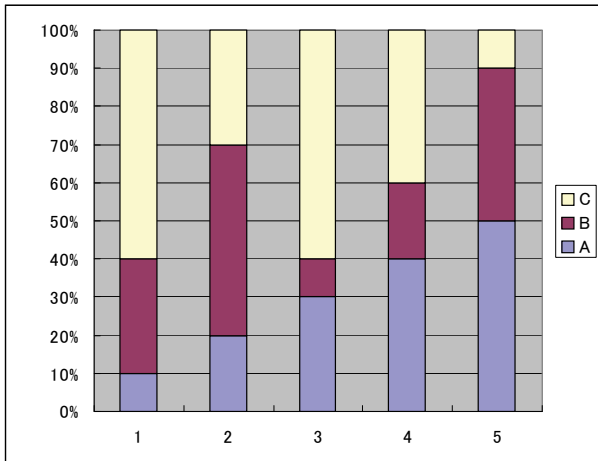


Fig.2 A Bar Graph

3. CONCLUSION

Type the contents of the conclusion here.

←
Left
Margin
18mm

REFERENCES

References are listed after the main text of the paper. Where a reference is cited, enter the superscripted number of the reference in parentheses at the appropriate location in the text. The format for reference entries is described in SIST 02-2007.

- (1) Taro Jidosha: Vehicle Dynamics System, SAE Technical Paper 0000-01-2345 (2014)
- (2) Michel J. Fox : Template for Proceedings, Part I: Rules and Guidelines for Presentations, First Issue, p.100-104 (2004).

↑
Bottom Margin 25mm
↓

<Other Important Points>

- a. Please avoid the use of company names, product names, and commercial content in the title and text.
- b. Manuscripts describing research involving human subjects must state that experiments and so on were accepted by an Ethics Review Board or the like and that the participants in these experiments provided their informed consent.
- c. Assign numbers to chapters, sections, and sub-sections. Each number should be a combination of Arabic numeral(s) and period(s). As a rule, up to 3 levels of headings (chapter, section, and sub-section) can be used.
- d. Where an abbreviation is used, use the original term, regardless of whether it is a common noun or proper noun. If the abbreviation is not in general use, then the first time the term appears in the text, use the unabbreviated term followed by the abbreviation in parentheses. Use the abbreviation in all subsequent cases. The character style should be normal.
- e. Technical terms shall conform to the technical terms established by the Ministry of Education, as well as to the terminology standards of JIS and JASO. Non-technical terms shall also conform to the terms established by the former Ministry of Education, where applicable. Where the official terms are not applicable, use appropriate common expressions.
- f. Where a number with a large number of digits is used, place a comma after every third digit, moving leftward from the decimal point. Commas are not used to the right of the decimal point.
- g. Use the International System of Units (SI). For important numerical values, conventional units may also be used.
- h. See JIS Z 8202 (Quantities and Units) for quantity symbols, JIS Z 8201 (Mathematical Symbols) for mathematical symbols, the international chemical symbols for chemical symbols, and JIS B 0001 (Technical Drawings for Mechanical Engineering) for drawing symbols.
- i. Mathematical equations must be written within the width of a single column and cannot run over to the next column. If the equations are numbered sequentially, place the numbers in parentheses and to the right of the equations. Refer to equations in the text as Equation (1), Equation (2), and so on. Letters and symbols used to indicate equations and physical quantities shall be in italics and units shall be in English.